



Ellen Viola Brewer

May 24, 1948 - January 2, 2024

Ellen Viola Brewer was born May 24, 1948, in Indio, California, to William Allen Cravines and Frances Viola Bell Cravines. She died Tuesday, January 2, 2024, in Owasso, Oklahoma, at the age of 75 years. Ellen completed her education in Tulsa, Oklahoma and graduated with the McLain High School Class of 1967. She was married May 2, 1969, in Tulsa to Thomas Calvin Brewer. She spent much of her working life working in the insurance industry. She also took pride in caring for her family. She and Tom had made their home in Owasso, Oklahoma, in 2005. Ellen enjoyed a variety of pastimes. As a young mother she spent many days helping at the school with the PTA and bowled in the PTA bowling league. She also enjoyed quilting, taking care of her flower beds, painting ceramics, traveling, playing Bunco and game day with the Sassy Seniors. She also had a great love for animals. She loved her family, particularly the grandkids who affectionately knew her as “Grandma” and “EB”. Those she leaves behind who hold many cherished memories include:

Two daughters; Shelly Cole

Emily Baker and husband Eric

Grandchildren; Jaelyn Richardson, Trevor Cole, and Caden Baker

Sisters; Betty Kusleika and husband Bill

Wilma Brown and husband Tony

Audrey Hope

Vanessa Martin

In-Laws; Jessie Brewer

Ronnie Brewer and wife Allyn

Numerous nieces and nephews

Her beloved dachshund, Abbie Ann

She was preceded in death by her parents, and her husband Thomas Brewer.

Visitation will be held from 4:00 p.m. to 7:00 p.m. Monday, January 8, 2024, at Mowery Funeral Service in Owasso. Funeral service will be held 2:00 p.m. Tuesday, January 9, 2024, at the Mowery Funeral Service Chapel with Jim Leascher and Eric Baker speaking. Committal service and interment will follow at Graceland Memorial Park Cemetery in Owasso. The family requests memorial contributions be made in Ellen's memory to M.D. Anderson, P.O. Box 4486, Houston, Texas, 77210-4486, www.mdanderson.org , or St. Jude Childrens Research Hospital, 501 St. Jude Place, Memphis, Tennessee, 38105, www.stjude.org . Arrangements and services were entrusted to Mowery Funeral Service of Owasso.

www.moweryfs.com

Cemetery Details

Graceland Memorial Park Cemetery

Highway 169 and Highway 20
Owasso, OK 74055

Previous Events

Visitation

JAN 8. 4:00 PM - 7:00 PM (CT)

Mowery Funeral Service
9110 North Garnett Road
Owasso, OK 74055

Funeral Service

JAN 9. 2:00 PM (CT)

Mowery Funeral Service Chapel
9110 North Garnett Road
Owasso, OK 74055

Memorial Fund

JAN 9 (CT)

MD Anderson Cancer Center
P.O. Box 4486
Houston, TX 77210
<http://www.mdanderson.org>

Memorial Fund

JAN 9 (CT)

St. Jude Children's Hospital
501 St. Jude Place
Memphis, TN 38105
<http://www.stjude.org>

Tribute Wall

VM

“ I remember one time when we went riding. I was riding behind Ellen and she said duck. So I ducked down on her back, and the tree lamb hit me right on top of my head. She said I said duck I told her I had and she said to the side not on my back. Well she hadn't told me that!

Then we was running towards Mr.Coopers barn and another horse we had got which was Star but she wasn't broke yet. She came running toward us and it looked like they were going to have a head on crash. Sooo Ellen and I bailed off Smokey and of course they turned before running into each other. If we knew they weren't actually going to run into each other we would not have bailed off. We had a lot of adventures on old Smokey. He loved laying down in the water with you also. Going to miss you dearly Ellen miss you already. Love you older sister Ellen (hehe) your littlest sister...

Vanessa Martin ❤️

Vanessa Martin - January 09, 2024 at 09:43 PM

BE

“ Brooke Rowland, Hoover Elementary purchased the Sweet Tenderness for the family of Ellen Viola Brewer.



Brooke Rowland, Hoover Elementary - January 08, 2024 at 06:05 PM

BE

“ Brooke Rowland, Hoover Elementary planted a [Memorial Tree](/store/Product.aspx?ProductId=4518) in honor of Ellen Viola Brewer.

Brooke Rowland, Hoover Elementary - January 08, 2024 at 06:05 PM

AC

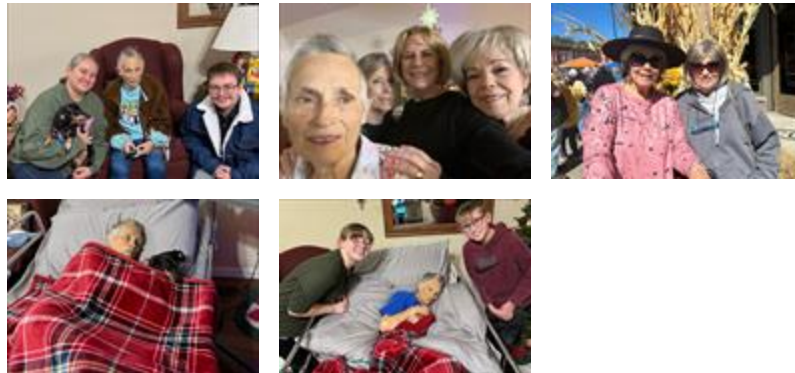
“ Brian & family, sending my thoughts your way on the loss of your loved one. Keep her alive in your thoughts daily. Warm thoughts to you all.



Andrea Couture - January 08, 2024 at 09:17 AM

SC

“ 20 files added to the album Mom



Shelly Cole - January 07, 2024 at 10:10 PM



“ *Small Garden Dish was purchased for the family of Ellen Viola Brewer.*



January 07, 2024 at 01:54 PM



“ *Full Of Love Bouquet was purchased for the family of Ellen Viola Brewer.*



January 06, 2024 at 05:01 PM



“ *Jessie and Brittany planted a [Memorial Tree](/store/Product.aspx?ProductId=4518) in honor of Ellen Viola Brewer.*

Jessie and Brittany - January 06, 2024 at 05:01 PM